

STANDARD DEPARTURE
CHART- INSTRUMENT
(SID) - ICAO

TRANSITION ALTITUDE
10000 FT

KYZYLORDA TOWER 120.9
KYZYLORDA ATIS (EN) 134.9
KYZYLORDA ATIS (RU) 122.9

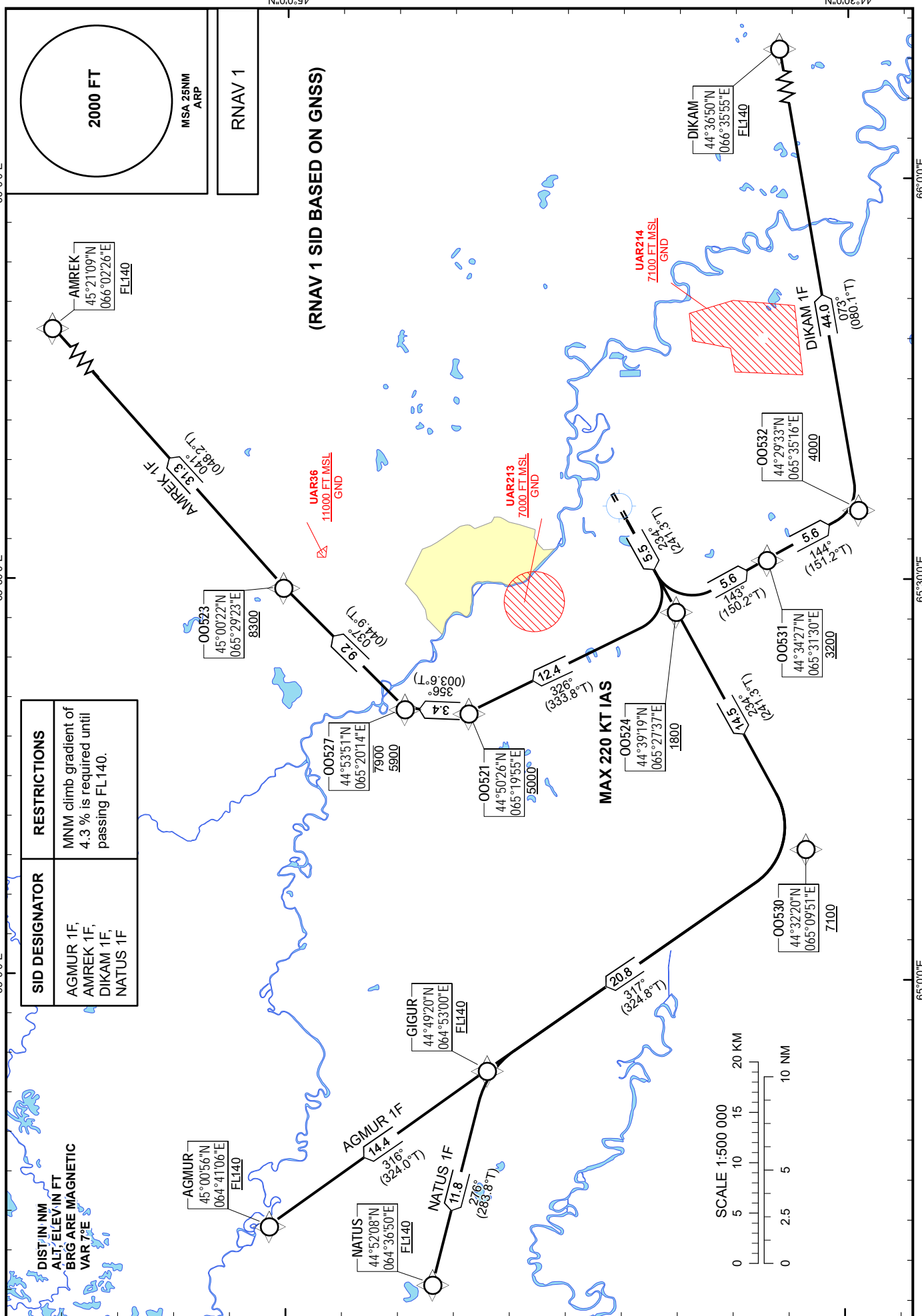
AGMUR 1F, AMREK 1F,
DIKAM 1F, NATUS 1F

KYZYLORDA
RWY 23

CHANGE: New chart.

DIST IN NM
ALT, ELEV IN FT
BRG ARE MAGNETIC
VAR 7°E

SID DESIGNATOR	RESTRICTIONS
AGMUR 1F, AMREK 1F, DIKAM 1F, NATUS 1F	MNM climb gradient of 4.3 % is required until passing FL140.



TABULAR DESCRIPTION

AGMUR 1F RWY23											
Serial Number	Path Descriptor	Waypoint Identifier	Fly - over	Course M°(T°)	Magnetic Variation(°)	Distance (NM)	Turn Direction	Altitude (FT)	Speed (KT)	VPA (°)	Navigation Specification
010	CF	OO524	-	234(241.3)	+7.5	5.5	-	+1800	-	2.6	RNAV 1
020	TF	OO530	-	234(241.3)	+7.5	14.5	-	+7100	-	3.2	RNAV 1
030	TF	GIGUR	-	317(324.8)	+7.5	20.8	R	+FL140	-	3.2	RNAV 1
040	TF	AGMUR	-	316(324.0)	+7.5	14.4	-	+FL140	-	1.9	RNAV 1

AMREK 1F RWY23											
Serial Number	Path Descriptor	Waypoint Identifier	Fly - over	Course M°(T°)	Magnetic Variation(°)	Distance (NM)	Turn Direction	Altitude (FT)	Speed (KT)	VPA (°)	Navigation Specification
010	CF	OO524	-	234(241.3)	+7.5	5.5	-	+1800	-220	2.5	RNAV 1
020	TF	OO521	-	326(333.8)	+7.5	12.4	R	+5000	-	2.5	RNAV 1
030	TF	OO527	-	356(003.6)	+7.5	3.4	R	+5900 -7900	-	2.5	RNAV 1
040	TF	OO523	-	037(044.9)	+7.5	9.2	R	+8300	-	2.5	RNAV 1
050	TF	AMREK	-	041(048.2)	+7.5	31.3	-	+FL140	-	1.9	RNAV 1

DIKAM 1F RWY23											
Serial Number	Path Descriptor	Waypoint Identifier	Fly - over	Course M°(T°)	Magnetic Variation(°)	Distance (NM)	Turn Direction	Altitude (FT)	Speed (KT)	VPA (°)	Navigation Specification
010	CF	OO524	-	234(241.3)	+7.5	5.5	-	+1800	-220	2.6	RNAV 1
020	TF	OO531	-	143(150.2)	+7.5	5.6	L	+3200	-	2.6	RNAV 1
030	TF	OO532	-	144(151.2)	+7.5	5.6	-	+4000	-	1.9	RNAV 1
040	TF	DIKAM	-	073(080.1)	+7.5	44.0	L	+FL140	-	2.2	RNAV 1

NATUS 1F RWY23											
Serial Number	Path Descriptor	Waypoint Identifier	Fly - over	Course M°(T°)	Magnetic Variation(°)	Distance (NM)	Turn Direction	Altitude (FT)	Speed (KT)	VPA (°)	Navigation Specification
010	CF	OO524	-	234(241.3)	+7.5	5.5	-	+1800	-	2.6	RNAV 1
020	TF	OO530	-	234(241.3)	+7.5	14.5	-	+7100	-	3.2	RNAV 1
030	TF	GIGUR	-	317(324.8)	+7.5	20.8	R	+FL140	-	3.2	RNAV 1
040	TF	NATUS	-	276(283.8)	+7.5	11.8	L	+FL140	-	1.9	RNAV 1

WAYPOINT COORDINATES

Waypoint Identifier	Coordinates	
AGMUR	450056.00N	0644106.00E
AMREK	452109.00N	0660226.00E
DER	444158.74N	0653422.82E
DIKAM	443650.00N	0663555.00E
GIGUR	444920.00N	0645300.00E
NATUS	445208.00N	0643650.00E
OO521	445025.72N	0651955.39E
OO523	450022.14N	0652922.88E
OO524	443919.29N	0652736.51E
OO527	445350.80N	0652013.53E
OO530	443219.86N	0650950.67E
OO531	443427.35N	0653130.37E
OO532	442932.76N	0653516.17E